

OPzV200 Valve Regulated Stationary Battery



1. Specification

DIN Size Tubular Plate

Nominal Voltage		2 V		TERMINAL:mm
Nominal Capacity		200 Ah/10HR		
Dimension	Length	± 2 mm	104 mm (5.75 inches)	
	Width	± 2 mm	208 mm (8.19 inches)	
	Height	± 3 mm	353 mm (13.08 inches)	
	Total Height	± 5 mm	385 mm (15.16 inches)	
Cell Weight		18Kg/40Lbs		
Type of Electrolyte		Gel Type		
Housing Material		ABS Resin		

2. Constant current discharge Ratings—Amperes 20°C/68°F(operating time to final voltage)

Final Voltage	1min	5min	15min	30min	45min	1hr	2hr	3hr	5hr	8hr	10hr	20hr
1.80	400	357	260	189	148	121	72.7	54.1	35.7	23.8	20.0	12.0
1.75	473	404	284	196	154	127	75.5	54.8	36.7	25.0	20.8	12.0
1.70	541	444	303	204	160	131	78.4	56.3	37.7	25.6	21.3	12.6
1.65	625	488	323	215	164	135	81.0	58.8	38.5	26.3	21.7	12.6
1.60	702	541	345	227	171	140	83.3	60.6	40.0	27.0	22.2	12.6

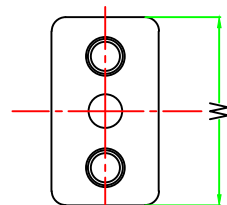
3. Constant power discharge Ratings—watts 20°C/68°F(operating time to final voltage)

Final Voltage	1min	5min	15min	30min	45min	1hr	2hr	3hr	5hr	8hr	10hr	20hr
1.80	720	648	475	351	280	231	140	105	69.5	46.6	39.3	25.0
1.75	827	715	515	364	289	240	145	106	71.2	48.8	40.7	25.0
1.70	932	775	548	376	298	247	150	109	73.0	49.8	41.4	25.0
1.65	1035	829	574	394	305	254	154	113	74.4	51.0	42.3	25.0
1.60	1128	896	603	413	315	261	159	116	77.0	52.2	43.1	25.0

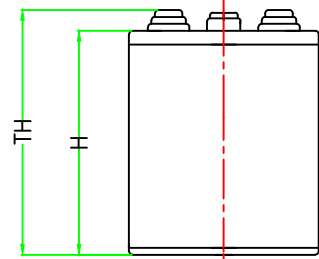
4. Characteristics

Float Life 20 °C(68 °F)	22 years	
Cycle Life 20 °C/68 °F	80% DOD: 1500 cycle 25% DOD: 5500 cycle	
Charging voltage 20 °C/68 °F	Float use	2.22V~2.25V
	Cycle use	2.33V~2.37V
Max. Charging Current	60A 20°C/68°F	
Recharge time 20°C/68°F	Float use	>96hours
	Cycle use	24hours(50%DOD)or 48hours(100%DOD)
Self discharge (20°C/68 °F)	<0.08% per week	
Internal Resistance(20 °C/68 °F)	0.75mΩ(approx)	
Short Circuit Current	2720A (20°C/68°F)	
Operation Temp. range	-20°C~+45°C(-4°F~+113°F)	

5. Dimensions



Nos. of Terminal : 2pcs.



6. Discharge Curve

